

THE ATHENÆUM OF PHILADELPHIA

An impressionistic painting of an interior room, likely a library or study, rendered in a warm, golden-yellow color palette. The scene features classical architectural elements such as tall, fluted columns and a chandelier with multiple glowing lights. The brushwork is visible and expressive, creating a sense of depth and atmosphere. The overall mood is one of historical grandeur and intellectual pursuit.

**205TH ANNUAL REPORT
2019-2020**

ATHENÆUM INDEX 2019-2020

Years since the Athenæum's founding: **206**

Years in our current home: **173**

Number of libraries in the American Membership Libraries Group: **17**

Oldest library in the MLG: **Redwood Library and Athenæum, Newport, RI (f. 1747)**

Newest member of the MLG: **Folio-The Seattle Athenæum (f. 2015, admitted in 2018)**

Number of Libraries in the Philadelphia Area Consortium of Special Collections Libraries (PACSCSL): **40**

Newest member of PACSCSL: **Wolfgram Memorial Library of Widener University**

New Athenæum members in 2019-2020: **96**

Active memberships at year's end: **1,974**

Active members for over 25 years: **82**

Active members for over 50 years: **8**

Longest current membership: **64 years**

Number of Lifetime Shareholders: **106**

Number of Sustaining Shareholders: **51**

Number of Young Friends (under the age of 35): **39**

Members who live in Philadelphia: **712**

Members who live in PA: **1107**

Members who live outside of PA: **155**

Number of events held at the Athenæum: **35**

Most popular Fall program:

Amy Cohen, "Louis Magaziner & Julian Abele: The Story of an Unusual Friendship"

Most popular Virtual program:

Richard Bell, "Hamilton: How the Musical Remixes American History"

Program podcasts added to the Athenæum website: **10**

Number of Athenæum-sponsored trips: **7**

Most popular trip: **Uptown Theater Tour**

Most popular new programming at the Athenæum: **Opera Philadelphia pre-opera talks**

Musical program partnership: **Allegro Presents at the Athenæum**

Youngest Audience: **First Fridays at the Athenæum**

Hippiest First Friday: **Pop-up Gallery featuring artist Perry Milou**

Most kid-friendly: **Architectural Toys: The Building Blocks of Inspiration**

Most popular afternoon programming: **At the Movies with Carrie Rickey**

Most popular movie: **A Room with a View**

Book & A/V donations added to the Library's collection: **44**

Number of books purchased through book funds established by Athenæum members: **357**

Total checkouts for books, CDs, & DVDs: **2,655**

Total e-books checkouts: **858**

Items borrowed from the University of Pennsylvania by Athenæum members: **213**

Athenæum items borrowed by University of Pennsylvania community: **596**

Research visits to the Busch Room: **175**

Total research requests (remote & in-person): **1,732**

Total requests served remotely between March 14 - June 30, 2020: **330**

Number of unique users of Athenæum's websites: **150,770**

Increase in usage of the Philadelphia Architects & Buildings website during quarantine: **68%**

Number of sales on the online art store, November 5, 2018 - April 24, 2020: **93**

Number of sales on the online art store from April 24, 2020 introduction of face masks to June 30, 2020: **927**

Most popular design since April 24, 2020: **The Cat That Walked by Himself by Rudyard Kipling**

Followers of our Instagram account as of June 30, 2020: **1,717**

Facebook Friends: **2,448**

Twitter Followers: **834**

Number of weekly "Brain Treats" emails sent since the start of the pandemic: **18**

Number of receptions during season: **12**

Most popular hors d'oeuvres at our receptions: **Deviled Eggs**



MESSAGE FROM THE PRESIDENT

To Shareholders, Subscribers and Friends of The Athenæum of Philadelphia:

We are pleased to present this annual report for The Athenæum of Philadelphia for the fiscal year ending on June 30, 2020. Despite the unfortunate constraints imposed by the coronavirus pandemic, it was a year of considerable progress at the Athenæum.

The most evident change was the July 2019 arrival of Beth Shalom Hessel as our new Executive Director. A PhD in American history as well as an ordained Presbyterian minister, she quickly breathed new life into the Athenæum with energy, imagination and a breadth of programming—including lectures, film series, concerts, and First Friday open houses—that generated healthy attendance and considerable buzz throughout Center City. The Athenæum also mounted significant exhibitions on the work of architect Louis Magaziner and the important legacy of structural engineering firm Keast & Hood.

Once the pandemic struck, forcing the closing of almost every cultural institution worldwide, Beth and her staff responded with an engaging series of online events, as well as weekly “Brain Treats” memos that challenged our membership to engage with a variety of architectural, artistic, social, and literary topics.

During the year, we also strengthened our Board of Directors with the addition of an outstanding new member, David B. Rowland, President and Chief Executive Officer of Second Federal Savings and Loan Association of Philadelphia.

After a disappointing six months of enforced closure necessitated by the Coronavirus pandemic, the Athenæum was finally able to reopen its doors—in a careful and highly limited manner—on September 8, 2020. At this writing, no one can say when we will be able to throw open our doors more widely in full confidence that the global health crisis is behind us. What we can promise, however, is that despite the exceptional care we must exercise to protect people’s health and well-being, all of us at the Athenæum will keep working to reward our membership, now and in the future—by making the Athenæum more welcoming and engaging, more stimulating and more vibrant.

With deep appreciation for your ongoing support,



Edward E. Scharff
President, The Athenæum of Philadelphia



David Rowland

BOARD OF DIRECTORS

Edward E. Scharff, President
Frank G. Cooper, Vice President
Penelope McCaskill Hunt, Secretary
Donald H. Roberts, Jr., Treasurer

Richard Bartholomew
David B. Brownlee, Ph.D.
Joan Countryman
F. Scott Donahue, Esq.
Margaret P. Duckett
Michael Gary
Francis R. Grebe

Robert E. Linck
Hyman Myers, FAIA
Satoko Izumi Parker, Ph.D.
Hon. Gregory P. Montanaro
David B. Rowland
Lea Carson Sherk
Robert Morris Steiner, M.D.
John C. Tuten, Jr.

Directors Emeritus

John Otto Haas
James F. O’Gorman, Ph.D.

MESSAGE FROM THE EXECUTIVE DIRECTOR

Dear Athenæum Members and Friends:

The 2019-2020 fiscal year coincided with my first year as the executive director of The Athenæum of Philadelphia. What a year! It began with an intellectually rich tour of the Folger Shakespeare Library in Washington, D.C., with its director Dr. Michael Whitmore. It ended during quarantine with a stimulating Zoom Summer Speaker Series, which included such fascinating authors as Lydia Denworth and Richard Bell. Through it all, each of you has made each day special through your support and engagement with all that we do.

Last fall we staged a record number of programs and attracted a record number of new members. We launched two impressive exhibits: on architect Louis Magaziner and structural engineering firm Keast & Hood. We hosted convivial First Fridays that brought many new faces into our building. The Athenæum also fostered new partnerships that enhance the benefits we offer members. Two notable examples: our new partnerships with Opera Philadelphia and Allegro Presents, which bring new musical offerings and new musical insights to our beautiful space. A personal highlight of the fall was attending the Soane Museum Foundation gala in New York City, where the Athenæum received the Foundation's prestigious Visionaries award.



In the Spring, the coronavirus pandemic threatened to slow our momentum as our city and world moved into lockdown. Athenæum staff rallied to produce weekly "Brain Treat" emails that brought our collections to your inbox, started virtual book clubs, and expanded our e-book selections and vestibule pick-up of books. We continued during the quarantine to foster relationships with area cultural and historic institutions and the national network of member-supported libraries. The surprise hit of this past season were our Athenæum face masks, which sold like hot cakes on our website!

Throughout the quarantine period, I was grateful that we were able to support our staff with full salary and benefits, thanks to a strong endowment and the procurement of a federal PPP loan and a Small Business Administration grant.

As we move into a new fiscal year -- my second at the helm of this venerable organization -- the Athenæum continues to bring you relevant and challenging Speaker Series; a new Afternoon with the Athenæum line-up of programs; enhanced membership benefits; and continued opportunities to connect online and in person with our renowned research collections. Even so, we eagerly await the day when the pandemic is behind us and we can safely throw our doors open to members and guests. We are planning a course for our future that ensures our programs, collections, and library make the Athenæum *the place* in our community for engagement and connection with the beating heart of our city, past, future, and today.

With joy and appreciation,

A handwritten signature in black ink that reads "Beth Shalom Hessel". The signature is fluid and cursive, written in a professional but personal style.

Beth Shalom Hessel, Ph.D.
Executive Director

STAFF

Beth Hessel, Ph.D., Executive Director

Jim Carroll, Imaging Specialist- Regional Digital Imaging Center

Denise Fox, Collections Care Manager

Tess Galen, Administrative and Events Assistant

Bruce Laverty, Gladys Brooks Curator of Architecture

Jill LeMin Lee, Librarian

Lois Reibach, Resource Description and Access Librarian

Gabrielle Rodriguez, Membership and Communications Associate

Michael Seneca, Director- Regional Digital Imaging Center

Louis Vassallo, Building Supervisor

VOLUNTEERS

The Athenæum is extremely grateful for the long-time support of volunteers who help Board and staff move our mission forward:

Linda Ellsworth; Isabella Fianza; Jeanne Pond and Mary Ellen Weber collectively gave more than 500 hours of service this year to the architecture and library departments. Their work included inventory, cross-referencing catalog entries, scanning, and processing of collections.

Donna Baker and Carol Miller inaugurated our Athenæum Ambassador's program. Their excitement for our programs and members meant they were eager to help at evening programs by welcoming guests, staffing the front entry, and connecting participants at receptions.

Michael Bedrosian, who has found the Athenæum a genial place to work as an independent contractor, is helping staff create a more up-to-date website after serving on our Membership Task Force (Winter 2020).

Mrs. G, whom many remember from her years keeping everything in the front office running smoothly, brings her sunny disposition to the Athenæum on days we are short-staffed.

Our many members who volunteer their time and skills on Athenæum committees and task forces:

Finance Committee: **James H. Hill, Jr.**

Literary Award Committee: **Louise Beardwood (deceased), Helen-Ann Comstock, Mike Eeley, Jane Fischer, Faith Midwood, Theodore R. Robb, Kathy M. Shelton, Karen D. Stevens (deceased), Marta Barbeosch Varela**

Literary Award (Art and Architecture): **Jeanne Pond, Samuel A. Streit, Daniel H. Traister**

Collections Committee: **Charles Burnette, Peter Conn, Jon Cresswell, Richard deWyngaert, Connie Hershey, Joan Johnson, Pam Schreiber, Wesley Sessa, Jr., Maria Thompson, Sara Thompson, Leanna Yoo**

Superintendence Committee: **Ed Jakmauh**

Marketing & Communications Task Force (Winter 2020): **Ed Tettemer**

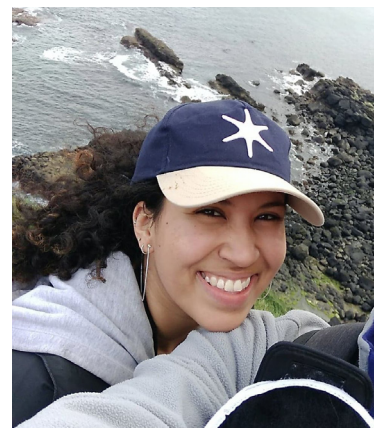
We are so thankful to each one of you!



New Staff

After 16 months with us, Membership Coordinator **Alexandria Lang** returned to her hometown of Buffalo, NY to serve as the Annual Fund and Grants Manager at the Aquarium of Niagara in August 2019.

In November 2019, we welcomed **Gabrielle Rodriguez** as our Membership and Communications Associate. A graduate of Amherst College where she majored in Anthropology with a concentration in Environmental Systems and History, Gabrielle comes to us from the Museum of the American Revolution. She says, "As a proud history nerd, I truly love the wealth of stories and range of characters that live within the halls of the Athenæum. You could often find me napping between the stacks at my favorite library or bookstore as a child, exhausted from hours of diving into new worlds within the pages of books - and I find the same sense of excited wonder here every single day whether I'm exploring the vault, researching our collections, or sharing stories with an enthusiastic member."



Gabrielle Rodriguez

ATHENÆUM HONORED BY THE SIR JOHN SOANE MUSEUM FOUNDATION

In 2019, the Sir John Soane Museum Foundation designated The Athenæum of Philadelphia as the institutional recipient of the annual Soane Foundation Honors. Each year, their Board of Directors honors “present day innovators, leaders, and visionaries in the fields of architecture, design, urban planning, architectural education and philanthropy” at a gala in New York City. The Gala proceeds benefit the Sir John Soane’s Museum Foundation and the Soane Museum in London.

Soane Foundation Chair Paul Whalen, FAIA, wrote of the Athenæum, “Today, as a result of its major investment in preservation, expansion, and accessibility of resources, the Athenæum has become a vibrant twenty-first century institution; an integral part of the cultural fabric of Philadelphia and beyond; and a vital resource for the architectural profession at large as well as an informative pleasure for enthusiasts.”

The Athenæum hosted a genial and enthusiastic visit from several Soane board members in September 2019. On Wednesday, October 23, 2019, executive director Beth Hessel, board President Ned Scharff, board members Scott Donahue and Robert Steiner, and Athenæum shareholder Barbara Eberlein joined several hundred revelers at the Rainbow Room of the Rockefeller Center for a celebratory evening. Mr. Scharff received the award on the Athenæum’s behalf; you may view the medal in the executive director’s office!



Ned Scharff, Paul Whalen (Soane Foundation Chair), and Beth Hessel. **Photo:** Julie Skarratt

“Congratulations...and for those of you who might find yourselves in London, do yourself a favor and pay a visit to the Soane’s Museum which is just remarkable.”

Frank G. Cooper

“A great award for an amazing institution. Congratulations!”

Kathy Dowdell

THE ATHENÆUM OF PHILADELPHIA:

“THE PURSUIT OF KNOWLEDGE, HISTORICAL INTEGRITY, AND COMMUNITY”

LIBRARY

Our Library Reading Room inspires with its sunlight-dappled yellow walls, its lofty windows that invite reflection on our place in the panoramic City of Philadelphia, and the wonderful smell and sight of books and periodicals lining shelves and tables and awaiting our discovery. Visitors are amazed to learn that we are a circulating library where new releases mingle with the classics to which we return year after year.

The Athenæum Reading Room is a place to lose yourself in a book, to focus and write your own book, or to mingle with friends at lecture receptions, when the tables groan with delicious bites from Day By Day Catering. It transports us back in time and propels us into the future. Our books and spaces help connect us as a community of avid readers and learners. The Reading Room served as a space of wonder and connection this past year.

RESEARCH & MUSEUM COLLECTIONS

Our architectural archives celebrate the rich and diverse history of architecture, urban planning, and historic preservation in Philadelphia. Philadelphia architects have broken new ground in our city and around the world. Practitioners, students, and homeowners rely on our in-house and digital collections to inspire and guide their own projects. Scholars use our collections to investigate the cultural history of our built environment. Those with a passion for the past use our records to deepen appreciation of their neighborhoods.

Our museum collections enhance the beauty and interest of our National Historic Landmark building: the paintings and furniture that grace our halls, the artifacts in our Bonaparte room, and the items that we use in telling fascinating stories on First Fridays.

We are delighted by the many partnerships we forged this past year—partnerships that expand access to our collections and the stories that they help us tell. Our 33 new accessions add value to our collection.

“The Athenæum’s dedication to the pursuit of knowledge, historical integrity, and community makes it a very special place in Philadelphia.”

**Ryan Bonner,
Young Friend/Shareholder**

PROGRAMS: EVENTS, LECTURES, CLASSES, TOURS, AND EXHIBITS

There is always an extra buzz in the air at the Athenæum on program days. Our halls and grand staircase bustle with members and guests, visitors and staff sharing greetings and anticipation for an hour of “back in school” learning with distinguished authors and scholars. We all delight in the crowded, convivial receptions and the thoughtful questions our fellow participants pose to speakers.

Athenæum lecture series, conversation groups, book clubs, and classes, tours, and exhibits connect the riches of our library, museum, and research collections with the past, present, and future in vibrant and meaningful ways. Through our programs, we make new friends and grow in our knowledge of our city. In 2019-2020, we increased the scope and strength of our offerings and found new ways to connect amid the COVID-19 shutdown.

REGIONAL DIGITAL IMAGING CENTER

The Athenæum created RDIC in 2004 to serve as the technology center for Athenæum projects. Its large format scanner digitizes the Athenæum’s oversized architectural collection materials while serving as a regional digitization hub for external clients. Through RDIC, we have developed rich partnerships with other Philadelphia institutions and our city’s vibrant artist community. They rely on our scanner capacity to create museum quality prints of their artwork. RDIC makes our collections and the collections of other entities accessible to an expanding global audience.



Photo from the tour of *Costuming THE CROWN* at Winterthur.



LIBRARY

During 2019-2020, staff increased member access to book selections with:

- Monthly “themed” bookshelves that highlight staff favorites and interesting themes
- Increased promotion of our resource sharing agreement with the University of Pennsylvania, which provides shareholders with access to millions of volumes
- Growth of our e-book selection and the number of users during the pandemic
- Implementation of contactless “vestibule” pick-up and drop-off service in June 2020
- New book clubs

“The National Historic Landmark building makes the Athenæum special to me. In addition, being able to borrow books from the University of Pennsylvania is a fantastic resource. I like getting out of my comfort zone of topics with the variety of speakers.”

Sandra Myers, Shareholder

POPULAR BOOKS

The Beneficiary by Janny Scott
The Dutch House by Ann Patchett
The Library Book by Susan Orlean
Unto Us a Son is Given by Donna Leon
New Girl by Daniel Silva

TOP E-BOOKS

The Dutch House by Ann Patchett
The Long Call by Ann Cleeves
The New Girl by Daniel Silva
The Beneficiary by Janny Scott
A Better Man by Louise Penny

POPULAR DVDS

Downton Abbey: the Motion Picture
Shetland (Season 5)

TOP PERIODICALS

Country Life
The New Yorker
The Atlantic
Consumer Reports on Health
Architectural Digest

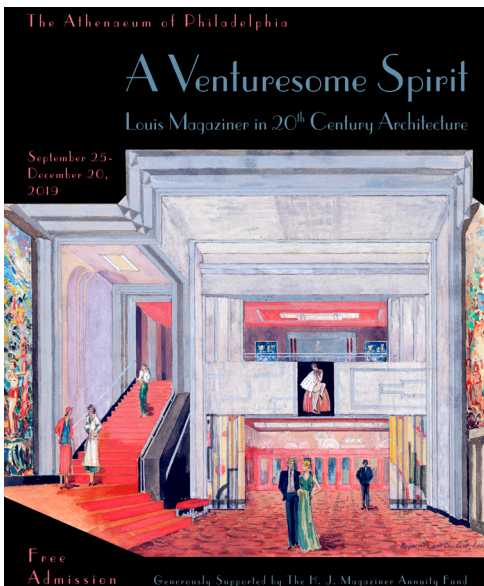
PROGRAMS

TOP DRAWS

Amy Cohen, "Louis Magaziner and Julian Abele: The Story of an Unusual Friendship"	(180 attendees)
Signe Wilkinson, "Political Cartooning: From Martin Luther to Frank Rizzo and Donald Trump"	(126 attendees)
Eric Foner, <i>The Second Founding: How the Civil War and Reconstruction Remade the Constitution</i>	(124 attendees)
Tom Keels, "Designing for the Dead: Art and Architecture of Philadelphia Cemeteries"	(123 attendees)
Nancy Moses, <i>Fakes, Forgeries and Frauds</i>	(122 attendees)

TOP DRAWS ON ZOOM

Richard Bell, "Hamilton: How the Musical Remixes American History"	(81 households)
Thom Nickels, "Beyond Bricks and Mortar: Real Life Stories"	(75 households)



EXHIBITIONS

A Venturesome Spirit: Louis Magaziner in 20th Century Architecture
September 25 - December 20, 2019
Curator: Bruce Laverty

Structure & Purpose: The Legacy of Engineering at Keast & Hood
January 9 - March 31, 2020
Curator: Izzy Kornblatt

"The Keast & Hood exhibition, *Structure & Purpose*, provided a rare opportunity for a current practicing firm to stop and reflect on our company's history, while honoring the legacy of the founding partners. To share with the public the culmination of 65+ years of practice was an honor and there could have been no better partner in doing so than with the Athenæum of Philadelphia."

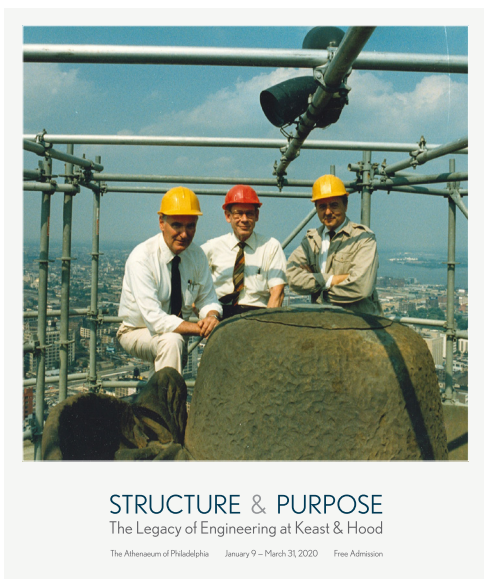
Dean Doukakis, Principal, Keast & Hood

Photos Left column from top:

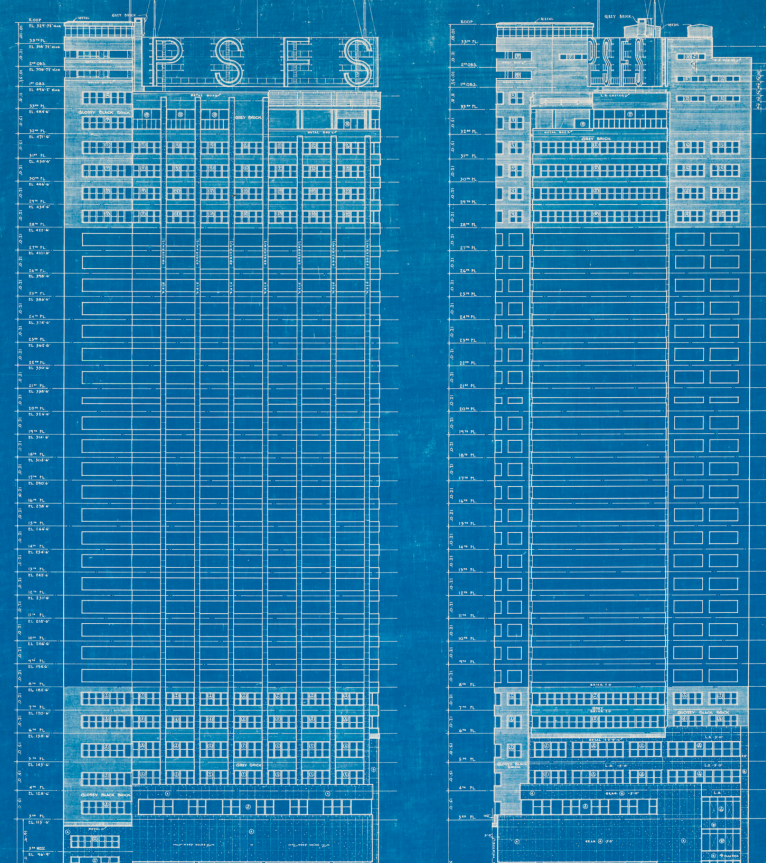
- The Folger Shakespeare Library Tour
- *Structure & Purpose* Exhibition
- First Friday with Artist Perry Milou

Photos Right column from top:

- Verdi's Requiem by Opera Philadelphia
- *A Venturesome Spirit: Louis Magaziner in 20th Century Architecture* (Private reception for families of Louis Magaziner and Julian F. Abele)
- Architectural Toys First Friday







RESEARCH & MUSEUM COLLECTIONS

Selected Acquisitions

Architectural

- Group of 27 blueprints of the PSFS Building
- Two blueprints of a house for Miss Helen S. Pearson, Bryn Mawr, William L. Price, Architect, 1900
- 1,500 photo prints and negatives by photographer Jerome Lukowicz
- A collection of 4,500 assorted photographs of the Philadelphia area
- A group of seven historic theater photos including the Sedgwick Theatre

Museum

- A rare watercolor painting depicting the country estate Wain Grove in Frankford, Philadelphia as it appeared in 1797
- A collection of 19th century French Napoleon memorabilia, including figurines, paintings and engravings
- Building on our collection of antique German Richter's Blocks, the Athenæum acquired additional toys that have sparked children's creativity and inspired future architects for generations. Among the additions are the Mysto Erector Structural Steel Builder set, circa 1912, the forerunner of the classic Erector Set; and an early Lincoln Logs set, circa 1928, manufactured by J.L. Wright, son of architect Frank Lloyd Wright.



"As it became clear that both archives and childcare would likely soon be shutting down, I knew I had to squeeze in any last research that I could manage. It should be no surprise that the Athenæum was high on my list! As I've done many times in the past, I headed to the library to examine several volumes from its wonderful collections related to Philadelphia's urban and planning history. I look forward to the chance to return again in person, hopefully soon!"

Dr. Francesca Ammon, Associate Professor of City and Regional Planning and Historic Preservation at the University of Pennsylvania



Top: Blueprint of East and North Elevations of PSFS Building, 12th & Market Streets, Philadelphia, Howe & Lescaze, Architects

Middle: Roland Bauman Rare Books, Locust Street, Philadelphia, Jerome Lukowicz, Photographer
Gift of the Estate of Jerome Lukowicz.

Bottom: Napoleon memorabilia. French, 19th century.
Gift of Chantal Westby

REGIONAL DIGITAL IMAGING CENTER

In 2019-2020, RDIC completed several major internal digitization projects that included:

- The entire 55-volume run [1886-1940] of *The Philadelphia Real Estate Record and Builders' Guide* (46,650 pages) with its own full-text searchable website. www.philageohistory.org/BuildersGuide/
- Architect Horace Trumbauer's 10-volume Drawing Registers and Account Books, now available on *Philadelphia Architects & Buildings* (PAB) www.philadelphiabuildings.org
- The Sarah Josepha Hale (1788-1879) Collection of letters with funding from PACSCL's "In Her Own Right" project. As editor of the 19th century women's magazine *Godey's Lady's Book*, Hale influenced 19th century women's fashion, politics, and intellectual ideas. omeka.philaAthenaeum.org

"Dolan/Maxwell are dealers in distinguished Modern and Contemporary art since 1984. We rely on RDIC to create large image files for the prints, drawings and paintings we offer to our clients who are museums, corporations and private collectors. Image quality has only become increasingly important in these days of Covid 19 and sheltering at home. We need to make the best case for the works of art we represent and RDIC's friendly and always professional staff provide an excellent service."

Ron Rumford, Dolan/Maxwell Gallery

"I have called upon RDIC staff for help with two major projects: a complete redo in 2016-2017 of the company history galleries with exhibit design by Metcalfe Architecture and Design, LLC, and, more recently, a wide range of displays for the Grahame Wood Center for Servant Leadership designed by jacobswyper architects. Working with Michael Seneca and Jim Carroll is a pleasure and their professionalism assures a superior visual outcome no matter the medium. RDIC is a valued partner in bringing history to life."

Maria M. Thompson, Historian, Wawa Inc.

Opening of Wawa's 200th store, Souderton, PA, June 9, 1978



Mr. Pierce Archer
Mrs. Edith Eglin
George Ross Fisher
Janice Taylor Gordon

Mrs. Flora L. Becker
Mrs. Sandra B. Boyd
Mrs. Nelly M. Childress
Mr. John Hines Chimples
Mr. Mark Chimples
The Honorable Theodore Z. Davis
Mary Werner DeNadai
Mr. & Mrs. Kevin F. Donohoe
Mr. Robert W. Driscoll
Ms. Margaret P. Duckett
Matthew D. Dupee
Paula K. Fischer
Mr. Wm. Roderick Gagne
Mrs. Wanda S. Gunning
Mrs. Norma Martin Milner
Mrs. Constance C. Moore
Ms. Susan D. Ravenscroft
Mr. John A. Simkiss
Mr. Arthur R.G. Solmssen
Dr. Carol E. Soltis
Mr. William L. Weiner
Mr. Barry S. Wildstein

MEMBER

60+ Years

50 Years
(Joined 1969)

40 Years
(Joined 1979)

30 Years
(Joined 1989)

Mr. & Mrs. Philip Price
Hugh A.A. Sargent
Miss Joanne B. Williams

Mrs. Mary Ivy Bayard
Robert E. Booth
Charles H. Burnette
Mrs. Rebecca R. Clark
Mrs. Sonya D. Driscoll
James Lowell Fales Green
Mrs. William D. Hershey
Alvin H. Holm
Mr. Frederick J. M. LaValley
Mr. Mark Frazier Lloyd
The Reverend John E. & Dr. Faith Midwood
Mr. Daniel Patrick O'Connell
Mr. Alfred Wynne Putnam
Suzanne Root
Mr. Charles C. Savage
Mr. Martin Avery Snyder
Ms. Mary James Vaux
Mr. J. William Widing

Mrs. Benjamin Hoffman Barnett
Ms. Cheryl A. Bombeck
Mr. John M. Briggs
Ms. Janet Burnham
Mrs. Julia B. DeMoss
A. Louis Denton
Mrs. Oliver D. Dickerson-Maier
Ms. Linda V. Ellsworth
Ms. Elizabeth L. Gagne
Mrs. Carole Haas Gravagno
Mr. Nathaniel P. Hamilton
Stephen J. Harmelin
John Freeman Hayes
Mr. & Mrs. Bernard G. Heinzen
Ms. Hope Coppage Hendrickson
Mr. Francis Hughes

Mrs. Joan Lee Kremer
Mrs. Suzanne K. Lammers
Cynthia J. Little
Mr. David K. Marshall
Mr. Terrence M. McDermott
George H. Pearson
Mr. Peter S. Reed
David J. Richards
Mr. Dan H. Rothermel
Denise Scott Brown
Mr. Peter A. Sears
Ms. Rebecca Pepper Sinkler
Mr. Edward D. Slevin
Mrs. Julia Solmssen
Mr. Mark-Allen Taylor
Peter J. Tucci

Ms. Susan R. Behr
Ms. Susannah Carroll
Ms. Mary Ellen Carty
Mr. Albert M. Comly
Kathleen M. Comly
Mr. Carl Cordek
Mr. Edwin D. Coyle
Donna Weaverling Daley
Ms. Joan D'Antonio
Mr. P. Justin Detwiler
Ms. Mary G. DiGirolamo
Ms. Sandi Foxx-Jones
Mr. Steven Alan Grasse
Ms. Linda J. Harris
Mr. Paul M. Hirshorn
Mrs. Joan M. Johnson
Ms. Allison Kelsey
Professor William C. Lubenow
Mr. George H. McNeely
Thomas J. Morton
Mark W. Nester

MILESTONES

**25 Years
(Joined 1994)**

**20 Years
(Joined 1999)**

**10 Years
(Joined 2009)**

Cecil Baker
Mr. F. Jay Bowden
Ms. Jessamine Brandt
Mr. Robert A. Cerasoli
Ms. Anne Clattenburg
Peter Conn
Mrs. Helen W. Drutt English
Mrs. William Thomas Fleming
Ms. Elizabeth H. Gemmill
Mr. William B. Irvine
Mr. Stephen J. Kaufman
Mr. Kirby E. Kean
Mr. Thomas H. Keels
Daniel Kelley

Mr. David A. Linfoot
Ms. Madeline E. Miller
Mr. Jonathan W. Miller
Mr. Walter Bayard Peterson
The Very Reverend Craig A. Phillips
Ms. Nancy D. Pontone
Mr. John Randolph
Mrs. Elizabeth S. Roberts
Miss Dorothy Roseman
Mrs. Donna Stroud
Mr. John Tyson
Ms. Laurie Wagman
Mrs. Helen S. Weary

Ms. Diane Newbury
Mr. Scott O'Barr
Mrs. Barbara Oldenhoff
Ms. Ruth A. Parker
Ms. Siobhan Reardon
Mr. Eric Michael Rich
Mr. & Mrs. Edward E. Scharff
Mr. Laurits Halverson Schless
Mr. Neil H. Shah
Mr. & Mrs. John F. Smyth
Ms. Anna Coxe Toogood
Mr. Jeffrey Totaro
Ms. Julia Myer Ward
Mr. & Mrs. Edward A. Webber
Ms. Donna Wechsler
Mr. John J. White
David P. Wilmot
Mr. David W. Wright
Alan Yuspeh

LITERARY AWARD

Established in 1950, the Athenæum Literary Award recognizes and encourages literary achievement among authors who are “bona fide residents of Philadelphia or Pennsylvania living within a radius of 30 miles of City Hall” at the time their book was written or published. Nominees are reviewed on the basis of their significance and importance to the general public as well as for literary excellence. The Literary Award has expanded to two committees: one focused on literary works and a second that considers art and architecture books. The awards come with a lectureship at The Athenæum of Philadelphia.

The Winners for 2019:

Edward Posnett

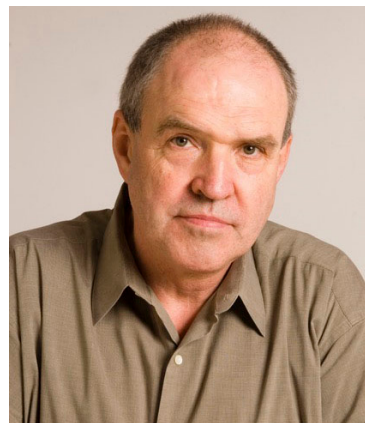
Strange Harvests: The Hidden History of Seven Natural Objects

Witold Rybczynski

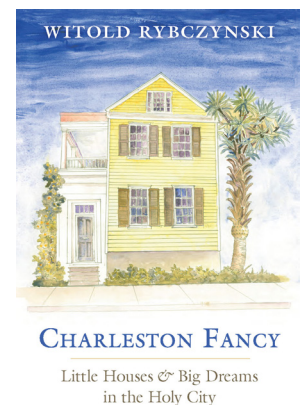
Charleston Fancy: Little Houses & Big Dreams in the Holy City



Edward Posnett



Witold Rybczynski



CHARLES E. PETERSON FELLOWSHIP PROGRAM

The Fellowship was endowed by Athenæum shareholder, Charles E. Peterson, FAIA (1906-2004), his colleagues, and his friends. The largest named fund administered by The Athenæum, it supports advanced research and publication in areas which reflect Mr. Peterson's life-long dedication to the study, recording, and preservation of early American architecture and building technology (pre-1860). It also supports an internship program at the Athenæum, providing students with hands-on experience with historic building documents. This year's interns worked on collection processing, scanning, and moving.

Fellows

Lori Aument

To support the creation of Found in Philadelphia, a six-episode podcast based on Philadelphia History.

<https://foundinphiladelphia.com/>

Carpenters Company of the City and County of Philadelphia

To support the scanning of the minutes of the Carpenter's Company of the City and County of Philadelphia; completing biographical research on its earliest members; adding this research to the Philadelphia Architects and Buildings database; and creating an online exhibit based on this work.

<https://archive.carpentershall.org/>

Interns

Dorothy Fitzgerald

Dorothy, recently graduated from Thomas Jefferson University, East Falls with a B.S. in Architectural Studies, will pursue graduate studies in Historic Preservation at Jefferson.

Jeremiah DiBease

Jeremiah, a 4th year architectural studies student at Drexel, plans to become a licensed architect.

CHARLES E. PETERSON PRIZE

A student competition of measured drawings, the Charles E. Peterson Prize is presented jointly by the Historic American Buildings Survey (HABS) of the National Park Service, the Athenæum of Philadelphia, and the American Institute of Architects. The annual competition honors Charles E. Peterson (1906-2004), founder of the HABS program, and is intended to heighten awareness about historic buildings in the United States and to augment the HABS/HAER/HALS collection of measured drawings at the Library of Congress. It represents a long-standing and meaningful partnership for the Athenæum.

FIRST PLACE AWARD: \$5,000

Project: Vizcaya, Casino (HABS FL-608-A)
Location: Miami, Florida
Program: University of Miami, School of Architecture
Instructor: Ricardo Lopez
Student Team: Laura Leichtman, Sydney Matsumoto, Adrianna Rivera, Andrew Schneider, Wenxin Jiang, Kyrah Williams, Yuxuan Niu

SECOND PLACE AWARD: \$3,000

Project: Taliesin West, Drafting Studio (HABS AZ-218-D)
Location: Scottsdale, Arizona
Program: University of Texas at San Antonio, College of Architecture, Construction and Planning
Instructor: Sue Ann Pemberton, FAIA
Student Team: Valeria Brizuela, Laura Bustillos, Jonathan Gonzalez, Marcus Huerta, Stephanie Mendiola, Gustavo Ochoa, Diana Rodriguez, Maitreyee Satia, Troy Tynan, Mansour Yousefpour

THIRD PLACE AWARD: \$2,000

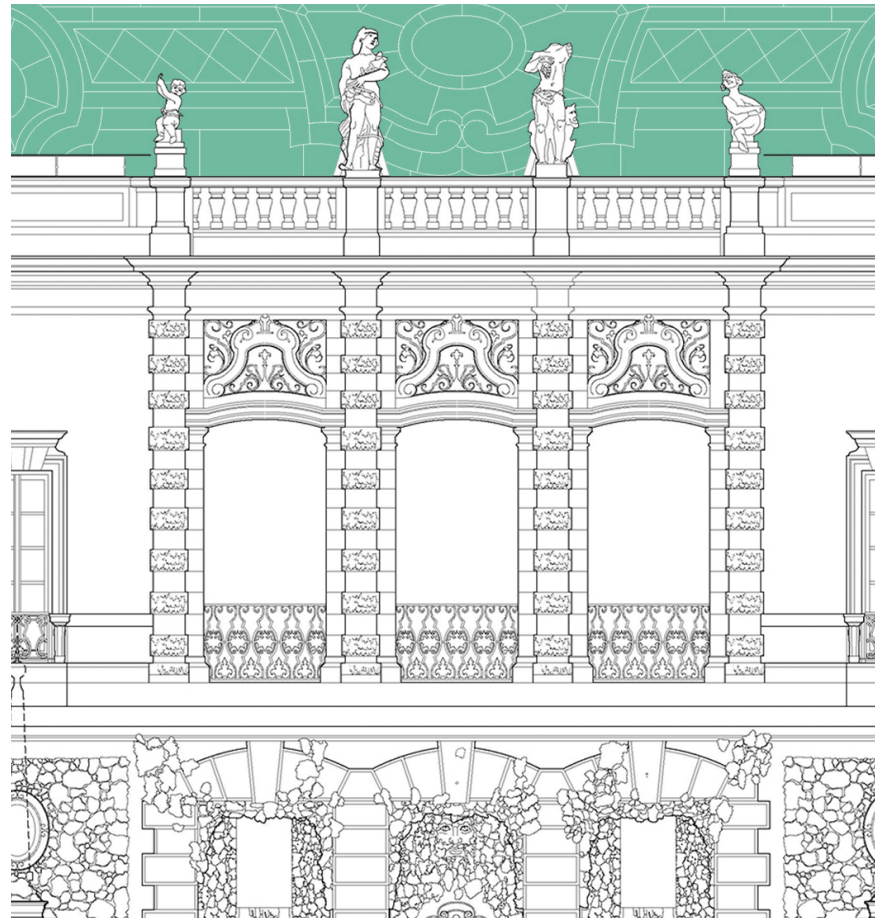
Project: Attanas Viaux Homestead, Log Barn (HABS MT-182-A)
Location: Gallatin Gateway vicinity, Montana
Program: Montana State University, School of Architecture
Instructor: Maire O'Neill Conrad
Student Team: Nima Safaeian



Dorothy Fitzgerald



Jeremiah DiBease



"My internship at the Athenæum of Philadelphia has been a tremendous learning experience for me, and I thank everyone at this institution for the opportunity and for the welcoming, friendly atmosphere."

Dorothy Fitzgerald, Peterson Intern

DONORS

\$10,000+

Anonymous
William M. Davison IV
Robert E. Linck*
Walter J. Miller Trust
Mrs. Joseph T. Beardwood

\$5,000-\$9,999

John Otto Haas
Zoë Pappas (new LS)
The Philadelphia Cultural Fund
Ned* & Nancy Scharff
David Seltzer (new LS)

\$2,500-\$4,999

Robert T. Foley
Mrs. A. Douglas Oliver
Charles Chauncey Savage
Robert M. Steiner*
Richard W. Bartholomew FAIA, AICP, PP*
Frank* & Margery Cooper
F. Scott Donahue*
Donald H. Roberts Jr.*
George Ross Fisher
Dennis Hummel

“The Athenæum is indeed one of Philadelphia’s greatest treasures. As shareholders, we have enjoyed twelve years of intellectual stimulation and refreshment through books, exhibits, lectures, and gallery talks. (We’ve even been honored to serve as chairpersons for two such exhibits.) Furthermore, we cherish the opportunities to meet old and new friends at receptions following these events. The digital imaging service has also been an invaluable resource for John as an artist. Few cities have such a gem. We are so thankful for our Athenæum.”

John & Ted Schmiechen, Shareholders

\$1000-\$2,499

Anonymous
Peter A. Benoliel & Willo Carey
Ann & David Brownlee*
Richard & Susan De Wyngaert
Florinda D. Doelp
Margaret P. Duckett*
Francis R. Grebe*
Robert Hauser
Beth Hessel and Seth Goldberg
The Hilda and Preston Davis Foundation
Penelope M. Hunt*
Julie Meranze Levitt Ph.D.
Sueyun Locks
Peter McCausland
Dennis C. McGlade FASLA
Collin F. McNeil
Hon. Gregory P. Montanaro*
David T. Orthwein
Satoko I. Parker*
The Philadelphia Contributionship
David B. Rowland*
Nora M.P. Schwarz
Marta Varela
Ignatius C. Wang, AIA
Daniel Wheeler
Historic Gowen Estate House Tours /
The Wissahickon East Project

\$500-\$999

Anonymous (2)
Alison Anderson
Michael Bedrosian
Frederick L. Bissinger
John & Mary Lou Blatteau
Jonathan Broder & Joy Bernstein
Tobey & Mark Dichter
Ineke M. Dikland
Constantine G. Doukakis
John T. Garrity Jr.
Michael Gary*
Elizabeth H. Gemmill
Mr. & Mrs. Dixon Gillis
Jeb Hart
Nancy J. Hirsig
Joan Countryman* & Mr. Ed Jakmauh
Justin Klein (In honor of Ned Scharff)

Janet S. Klein
Gloria H. Leibovitz
Martha Levine & Howard Sedran
Mr. & Mrs. Peter Longstreth
The Christopher Ludwick Foundation
Mary Patterson McPherson
Elizabeth Milroy & Diana Post
Barbara Oldenhoff
Steven J. Peitzman
Theodore Ryan Robb
Elizabeth D. S. Roberts
Karin Rosenberg
Dr. Carol E. Soltis
James Bennett Straw
Peter Travers
Joan K. Wells

“When you step into the Athenæum, you’re not only stepping into history, you’re adding to it. Everyone who walks through those doors leaves their own mark there, and takes some of it home with them.”

Bradford Pearson, Young Friend

*Members of The Board of Directors

\$100-\$499

Anonymous (19)
Robert L. Abramowitz Esq.
George J. Ahern
Pierce Archer
Carl & Joann Bailey
The Reverend John Dixon Bartle
D. Jeffry & Amy Benoliel
James C. Biddle
Rolin P. Bissell
Edward T. Borer
Brendan P. Bovaird
John R. Bowie
Mr. & Mrs. George Boyd V
H. William Brady
Richard A. Brand
Robert P. Breathing
Bonnie S. Brier
John M. Briggs
Harriet Brumberg
Jo Ann Buller
Monika Burke
Charles & Margo Burnette
Perry G. Caimi
Philippa H. Campbell
Capt. Thomas E. Carroll
Mary Ellen Carty
Susan Catherwood
Diana Chimes
Carl T. Clark EAIA
Theodore Clattenburg Jr.
John R. Collett
Helen-Ann Comstock
Gordon S. Converse
Peter F. Cooke
Carl Cordek
Edwin & Patricia Coyle
Elizabeth Crawford
Peter Cressman
Davis D'Ambly
Edna F. Dick
Barbara Dickerson-Maier
Anne and Steven Docimo
J. B. Doherty
Lance & Mary Donaldson-Evans
Kevin F. Donohoe
Elisabeth Doolan
Sonya Dehon Driscoll
John J. Dziedzina
Barbara Eberlein
Bruce M. Eckert

"The excursions I have attended-Folger Library, Laurel Hill Cemetery, and the Michener Museum-were as interesting, informative, and enjoyable as the in-house programs we have come to expect and enjoy at the Athenæum. I look forward with anticipation to many more."

Jan Stephano, Shareholder

Edith Baird Eglin
Steven B. Erisoty
The Exelon Foundation
Marlene Feldman
Johannah Fine
Mrs. William Thomas Fleming
Sandi Foxx-Jones
James Fratto & Jeanne Sigler
Nancy Frenze
Wm. Roderick Gagne
David & Donna Gerson
Hon. Frank Giordano
Janice Taylor Gordon Ph.D.
Kevin S. Gorman
Thomas H. Gouge M.D.
Richard & Mary Grant
Carole Haas Gravagno
William J. Green
Alan Jay Greenberger FAIA
David Griffith
Wanda S. Gunning
Chandrakant R. Gupta
Bill Haines
Christopher R. Hall AIA
Julia A. Haller M.D.
Linda J. Harris
Eric & Adrienne Hart
Edmund L. Harvey
Thomas S. Heckman
Mrs. S. David Hemphill
Lynn & Eric Henson
Eric Beard Henson
Anna Christine Huber
L. Stockton Illoway
Joseph H. Jacovini
Dr. & Mrs. William Jantsch
William Warner Jeanes
Scott M. Jenkins
Don & Arlene Jones
William J. D. Jordan
Ivan Joseph
Dean Kaplan & Barbara Mattleman
Donald R. Kardon
Steven B. King
Victoria Kirkham
George F. Koch Jr.
F. Peter Kohler M.D.
Joseph and Joanne Kolen
Bernice Koplin
Darrell Kratzer
Emilia & Peter Lapham
Frederick LaValley & John Whitenight
Adam E. Levine
Norman Lieberman Sylvia & Norman Lieberman
Cynthia J. Little
Eva G. Loeb
Dennis P. Lynch
Edwin B. Mahoney
Maureen Marcucci
Robert M. Maxwell
Terrence M. McDermott
Dagmar E. McGill
William B. McLaughlin III
George H. McNeely IV
John J. Medveckis

"My certificate of membership (Number 116) entitles me to 'one share,' and that one share has given me unlimited opportunity to enjoy all that the Athenæum offers its members. As a volunteer Ambassador, I am happy to enhance my 'one share' even more by greater involvement with members and staff."

Donna Baker, Shareholder and Volunteer Ambassador

John L. Melvin
Faith & John Midwood
Madelyn Mignatti
Beaty Bock & Jonathan Miller
Lynn H. Miller
Madeline E. Miller
Allen John Model
William H. Moorhouse
Roger W. Moss
William Mundt
Hyman Myers*
Joseph A. O'Connor Jr.
Laurie Olin
Dr. & Mrs. Lawrence Charles Parish
Linda Scribner Paskin
Robert Petito
Sandra Springer Pfaff
Christine Pickup
Nancy D. Pontone
Mr. & Mrs. Philip Price Jr.
Lee Quillen
John Randolph
Pierre T. Ravacon
Elizabeth M. Ray
Steven Reider
Gresham Riley
Franklyn Rodgers
Dr. Suzanne Root
John Pierpont Rosso
Christine Y. Rother
Elizabeth M. Pincus Rubin & Bruce D. Rubin
(in memory of Esther Leopold Starer)
Daniel G. Russoniello AIA
E. Ruth Sachs
Dr. & Mrs. S. Valence Sauri
John & Theodore Schmiechen
Paul & Barbara Schraeder
Lynn Schwartz
Buck Scott
Jo Valerie Seibert
Georgia Shafia
Geoff & Sandra Shepard
David P. Silverman
Robert M. Skaler
Mr. & Mrs. A. Gilmore Smith Jr.
John F. Smyth
Arthur R. G. Solmssen Jr.
James Steele

*Members of The Board of Directors

\$100-\$499

Mark N. Steinberger Esq. &
Ms. Ann C. Lebowitz Esq

Kathleen A. Stephenson

Stacey Jacovini Storm

Charles S. Strickler Jr.

Christine L. Sweeney

Robert M. W. Taylor

William Post Thomas

Mark B. Thompson

John Toates, RA

Anna Coxe Toogood

(In memory of Karen D. Stevens)

Jeffrey Totaro

Maria Traub, DML

Joan Rollins Tropp

Lisa D. Unger

Nadeen Van Tuyle

Ellen & Brian Velligan

Sandy & Jerry Vernick

Peggy B. Wachs

Audrey Walters

Marshall J. Walthew

James Bryce Warden

Eleanor Talbot West

Susan R. Wetherill

David Wilton

Jean K. Wolf

David W. Wright

Aaron Wunsch

Sherley Young

Alan Yuspeh

Nancy Zambelli Richards

Up to \$99

Anonymous (3)

Beverly Al-Greene

Donna E. Baker

John McLean Blickensderfer

George R. Brodie

Hon. Ann M. Butchart

Lisa W. Clark

Aaron Cohen

Estelina Louisa Dallett

H. Richard Dietrich

James W. Feeney

Mrs. G.

Deborah E. Glass

Michael P. Halpert

Hope Coppage Hendrickson

Paul M. Hirshorn

Richard W. Hurd

Louis M. Iatarola

Alix Rockwell Jacobs

Ivan Jurin

Henry Milne Justi

Kirby E. Kean

Christopher D. Kenney

Charles Curtis Kise

Richard Levitt

Elizabeth C. Masters

Anita McKelvey

Barbara J. Mitnick Ph.D.

Celeste A. Morello

Stephen J. Morgan

Carol Baer Mott

Kristin F. Mullaney

Nancy H. Nance

Diane Newbury

Samuel E. Olshin

Richard I. P. Ortega PE, AIA, FAPT

Robert L. Pallone

Wesley D. Parrott

William H. Pentz

Joseph T. Porter

Mike Pulsifer

Vincent A. Root

Caroline Ware Rusten

Peggy Sabo

Kate Royer Schubert

Anne Weldon Sims

Bonnie Slobodien

Marjorie Preston Snelling

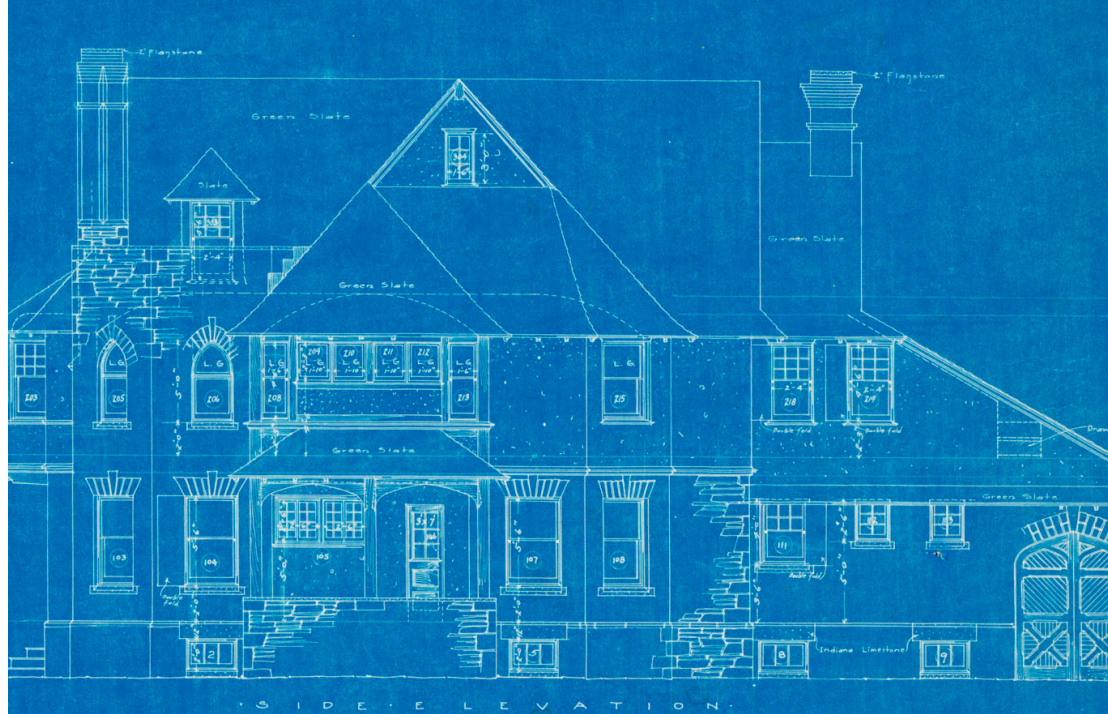
Martin Avery Snyder

Lucy Strackhouse

Richard L. Ullman

Fred Weinstein

Leonard H. Wilson



Above: Blueprint Elevation of House for Miss Helen S. Pearson, Bryn Mawr, William L. Price, Architect, 1900, Gift of Aaron Wunsch



Right: *Thomas Carstairs.* Artist unknown, c. 1800. During (detail) and after conservation treatment by Steven Erisoty. Gift of Gaynor Roberts Shane. Conservation made possible by a grant from the Pennsylvania Historical and Museum Commission



“The Athenæum exhibited my work exclusively in their gorgeous 2nd floor library during Philadelphia’s First Friday Art Event! I have been printing fine art giclees at The Regional Digital Imaging Center for over 10 years. They offer high resolution scanning and printing capabilities that are second to none on the Eastern Seaboard of the United States.”

Perry Milou, Artist

In-Kind Donations

Estate of Stanley and Dorothy Abelson
 Concha Alborg
 Beacon Press
 Arlene Bennett
 Elizabeth S. Browne
 Carl Clauss
 Florinda Doelp
 Randy Dolnick
 Charles Duff
 Linda Greenig Ernst
 Grace Farmer
 Alexander Feldman
 Elizabeth Fox
 Friends of the Boyd, Inc.
 General Society of Colonial Wars
 Nan Gutterman
 Howard B. Haas

Paul Hirshorn
 Historic Gowen Estate Tour Committee
 Penny Hunt
 Robert Kettell
 Peter J. Koblenzer
 Dr. Arthur Kover
 William G. Krebs
 Sue Lee
 Robert E. Linck
 Estate of Stephen Lynch
 Sally Magaziner
 James Massey
 Charles Moleski
 Robert L. Montgomery
 Sandra and Hyman Myers
 Rick Neibel
 Satoko Parker

Helen Niemtow Pratt
 Estate of Robert L. Raley
 Lois Reibach
 Lea Carson Sherk
 Simon and Schuster
 Ed Snyder
 Sam Streit
 Viking
 Richard Webster
 Frank S. Welsh
 Chantal Westby
 Wendy Woloson
 Aaron Wunsch
 Clifford W. Zink

Philadelphia Congregations Early Records

Home About News & Updates Browse Items Browse by Congregation Help Transcribe Contact Us

Featured Congregation/Collection

ST. PETER'S EPISCOPAL CHURCH, PHILADELPHIA, PA

In 1758 the vestry of Christ Church authorized the construction of a new chapel at Third & Pine Streets to accommodate its members living in the southern section of the city. St. Peter's Church, located at the corner of Third & Pine Streets, and Christ Church shared the same vestry, ministers, and records until they formally separated in 1832 were known as the United Churches of Christ Church & St. Peter's. The formal separation agreement stipulated that records created prior to 1832 were...

Philadelphia Congregations Early Records

When completed, the Philadelphia Congregations Early Records project will offer over 41,000 pages of records from Philadelphia's oldest congregations, connecting the archives of Christ Church, St. George's Methodist Church, Gloria Dei, Mikveh Israel, African Episcopal Church of St. Thomas, Episcopal Diocesan Archives, Presbyterian Historical Society, St. Peter's Episcopal Church and American Baptist Historical Society.

Digitized materials include minutes, account books, birth, marriage, death, and burial registers.

This project is supported by a Digitizing Hidden Collections grant from the Council on Library and Information Resources (CLIR). The grant program is made possible by funding from The Andrew W. Mellon Foundation.

"In the fall of 2017 Christ Church Preservation Trust was awarded a large CLIR Digitizing Hidden Collections grant to scan through RDIC and place online the records of Philadelphia's oldest congregations. The Athenæum's partnership in this process strengthened our proposal and the staff's meticulous scanning and careful handling of manuscript materials has enabled this project to move forward smoothly. It's a project I would have been hesitant to undertake without their participation and I'm so grateful that they're a resource for us and Philadelphia's cultural community."

Carol Smith, Christ Church Preservation Trust

Top: www.PhiladelphiaCongregations.org

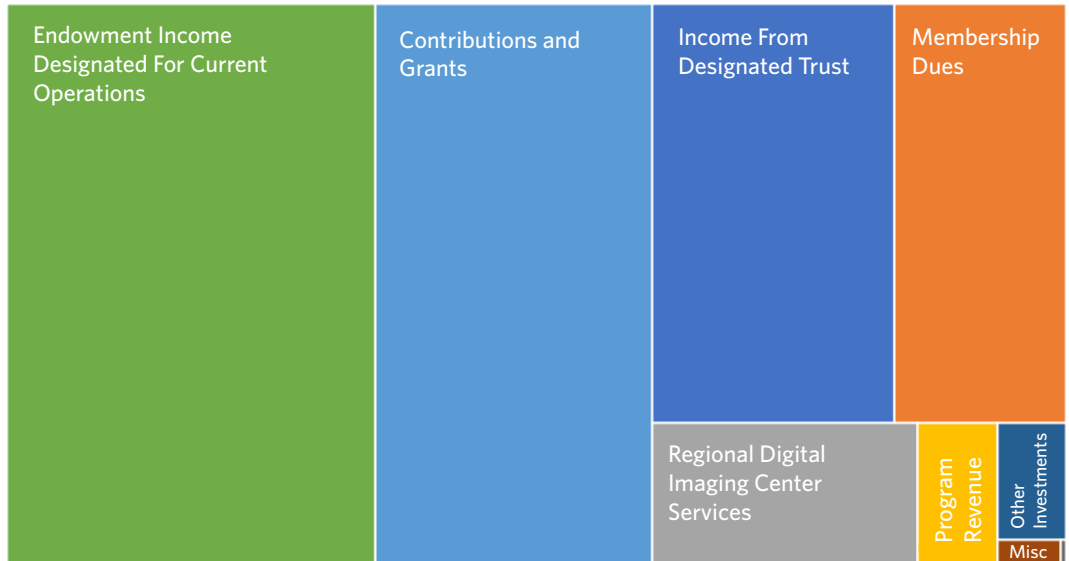
Bottom: The Folger Shakespeare Library Tour



FINANCIAL HIGHLIGHTS

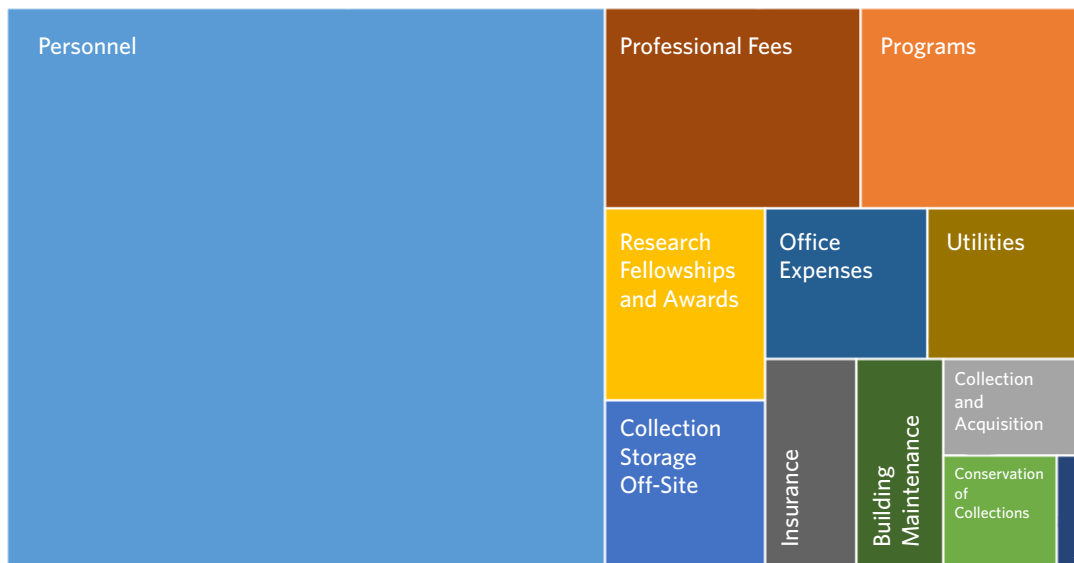
Fiscal Year Ended June 30, 2020

Total Income: \$1,580,410



Endowment income designated for current operations	\$550,066	RDIC Services	\$99,410
Contributions and Grants	\$413,457	Program Revenue	\$29,742
Income from dedicated trust	\$270,000	Other investment income	\$21,261
Membership Dues	\$192,170	Miscellaneous income	\$4,004
		Sales of publications	\$300

Total Expenses: \$1,255,414



Personnel	\$703,076	Utilities	\$46,919
Professional fees	\$107,303	Insurance	\$39,803
Programs-exhibitions and lectures	\$90,562	Building maintenance and service contracts	\$37,843
Research fellowships and awards	\$64,500	Collection and acquisition	\$27,044
Collection storage off-site	\$56,033	Conservation of collections	\$26,608
Office expenses	\$51,449	Professional society dues	\$4,274



Visit us online!

Username
PhilaAthenaeum



www.PhilaAthenaeum.org

Administrative and Events Assistant, Tess Galen and her husband, Daniel Dagorn at the Uptown Theatre tour

The Athenæum of Philadelphia
219 S. Sixth St.
Philadelphia, PA 19106



Kosher Jazz performing at the October 2019 First Friday event